

D
A
T
A

S
H
E
E
T

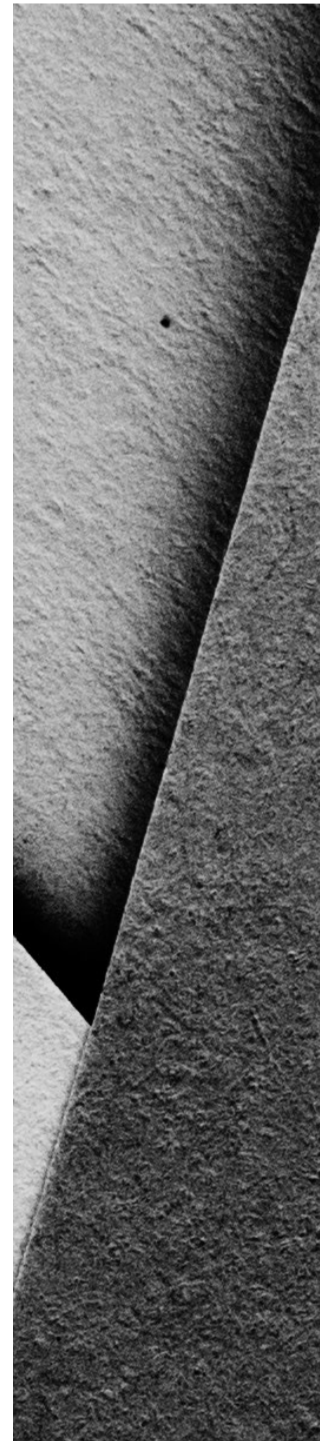
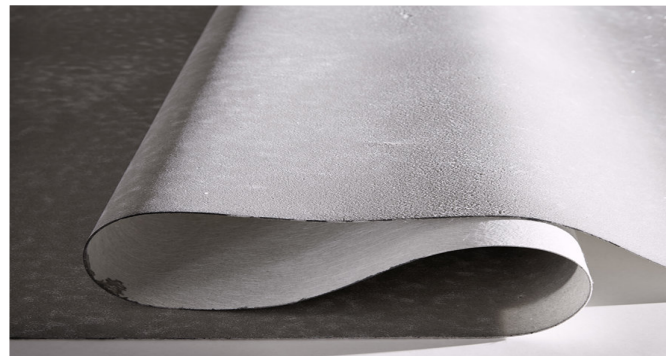
W
A
L
L
P
A
P
E
R

XSTONE

Surfaces free
from
functional
constraints

Our profession is to handcraft veneer surfaces, made in Germany, that are flexible, imitate the real surface with true likeness but are only two millimeters thick. Since our products are handcrafted, every piece that leaves our factory is an original.

A compromise on quality is not conceivable. Impossible ideas become possible, by bonding two millimeters of individually designed surfaces onto substrate, previous constraints of the raw material are completely lifted. Objects which look like they weigh a tonne are all of a sudden unexpectedly easy to handle. Our stone veneers are suitable for indoor use, for trade fairs, showers, facades, flooring and for crafting furniture.



Our surfaces are not flammable and can be used commercially. Mechanical properties of the surface, such as scratch resistance and anti-slip treatment, with XSTONE sealants make them suitable for any application. We also manufacture custom surfaces on request. The XSTONE brand is currently being sold in thirteen countries. For more information on our textures or other products visit our website or send us an email.



Application Guidelines

Transport and Storage

During transport wallpaper must be laid down flat or rolled onto the core and should only be stored above the minimum temperature of 10 ° C in dry conditions.

Substrate Properties

Requirements for DIN 18365 apply; dry without dust, soot or dirt; highly absorbent substrate with solvent-free primer, pre-treat smooth surfaces with solvent-free adhesive primer. Before rolling out and processing goods, store them at room temperature for approximately one day or pre-heat them with a hot air gun.

Wallpaper can be glued on wood, concrete, plasterboard, tiles, plaster as well as many plastics. Please note our adhesive recommendations. When in doubt, please test adhesives on a small surface first.

Mixing the Adhesive

XSTONE internal adhesive: Mix and stir adhesive granules in approximately 2.5 liters of water and let the mixture rest for 15 minutes. Then stir again. Do not use in wet areas!

Cutting and bonding

Wallpaper lengths are cut to their desired size, from the reverse side, with a sharp-bladed cutter. It is advisable to adjust the decor when still dry and before bonding. After application of the appropriate adhesive, the raw wallpaper must be pressed down and knocked on with a felt board or cloth. Multiple wallpaper lengths can be joined in a single action. It is advisable to cut lengths before bonding, when dry. Seams between lengths can be grouted using the included spatula set. Please view our video tutorial before proceeding. Wallpaper can be fitted around corners by heating with a hot air gun.

XSTONE Sealant

Non-sealed XSTONE wallpapers are suitable for all indoor and outdoor surfaces. For special requirements in wet areas or higher load scenarios, e.g. external plinths, please use an additional sealing primer. Please review our data sheet and the video tutorials. For any other special surface requirements, please send an email with your application ideas to

Tools:

Sharp-bladed cutter, protractor, measuring tape, toothed spatula, brush, paint roller, hot air gun, felt board

Just like natural stone, every XSTONE surface is unique in texture and color. Before starting, please check that the structure and color match in order to achieve the most authentic look possible. Slight variances in material thickness, color and structure are product-specific and just like small imperfections do not represent an actual defect. Queries post-assembly and/or bonding are no longer accepted. We wish you successful completion of your project. Send us a photo, we would very much appreciate it.

@xstone_surfaces @xstone_surfaces1 orders@xstone.store

Technical Specifications

CONCRETE WALLPAPER

Width :	1000mm
Length :	3000mm
Thickness :	2mm
Colors :	1004,1005,1006,1007,1008, 1009,1010,1013,1071,1075, 1072,1201,1070,1063,1200, 1202,1203,1204 etc.
Support :	Glass fibre
Flammability :	A2
Haptics :	Roughness similar to concrete
Smoke emission:	s1
Load capacity :	Similar to concrete
Adhesive recommendation for inside :	XSTONE glue
Permeable :	Yes
Bleaching Response :	Unknown N/A
Flaming Droplets :	d0
Solvents :	None
Quality of the substrate :	Q4

Adhesive recommendation for non-absorbent substrates:

Mapei Ultra-bond Eco Contact

Adhesive recommendation for moist environments:

Mapei Ultra-bond Eco MS 4 LVT



©2019 XSTONE UK

Unit A1 & A2 South Marston Park, Stirling Road Swindon, Wiltshire UK SN3 4TQ.
www.xstonedesign.com
info@xstonedesign.com
Phone: +44 7539 855216